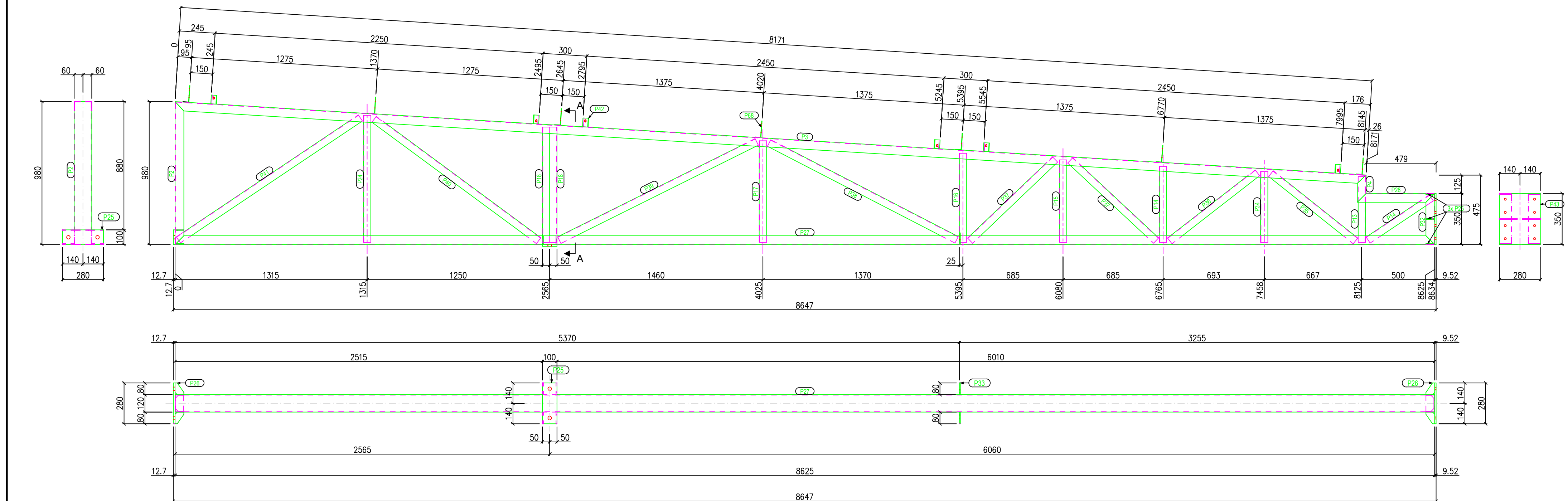
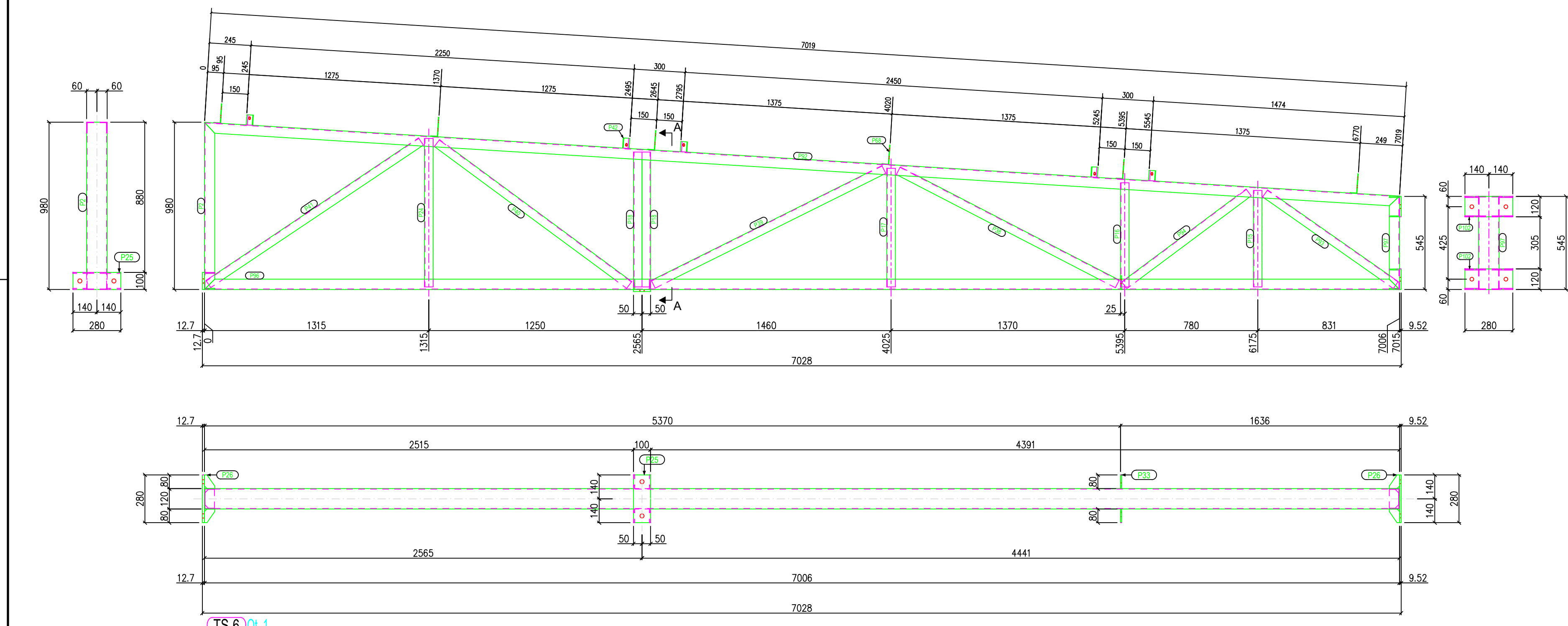


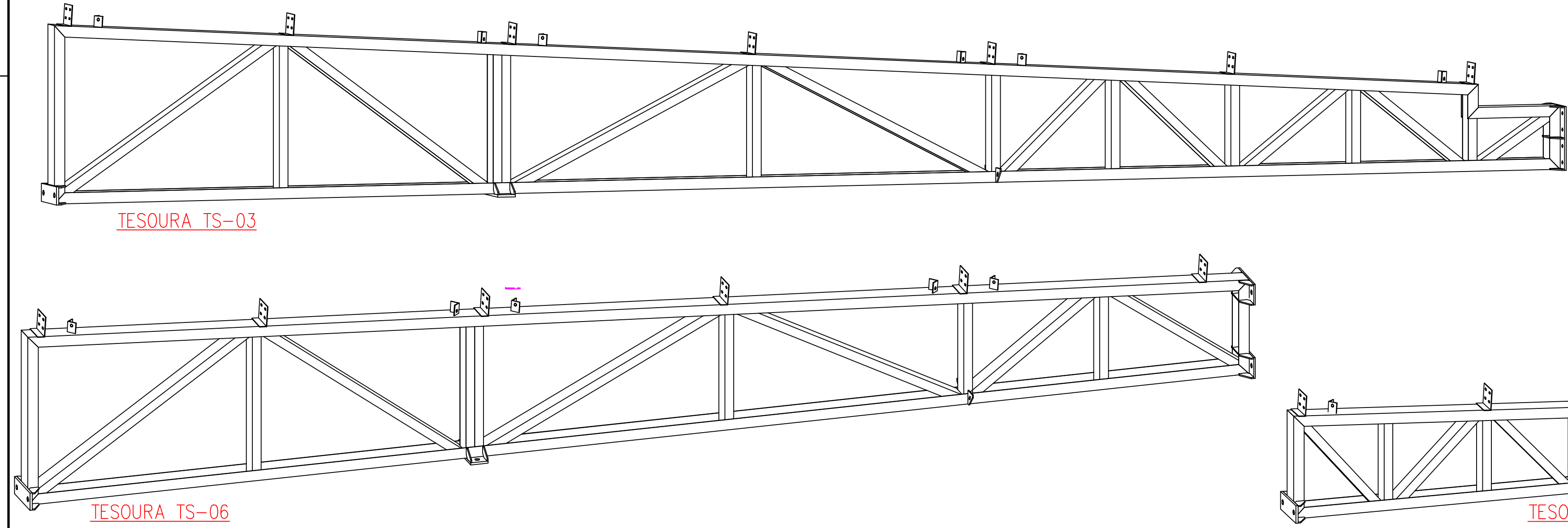
TS-2 Qt. 16



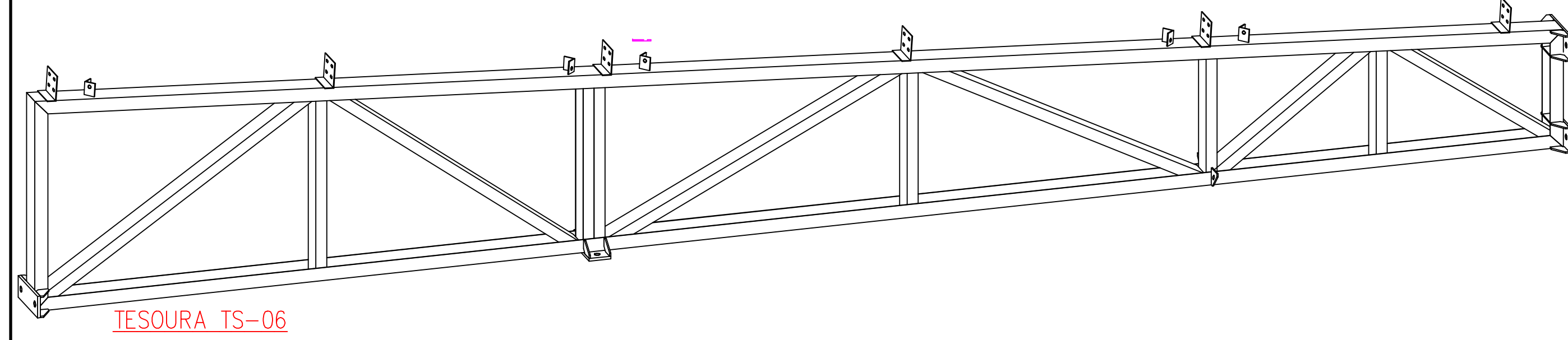
TS-3 Qt. 1



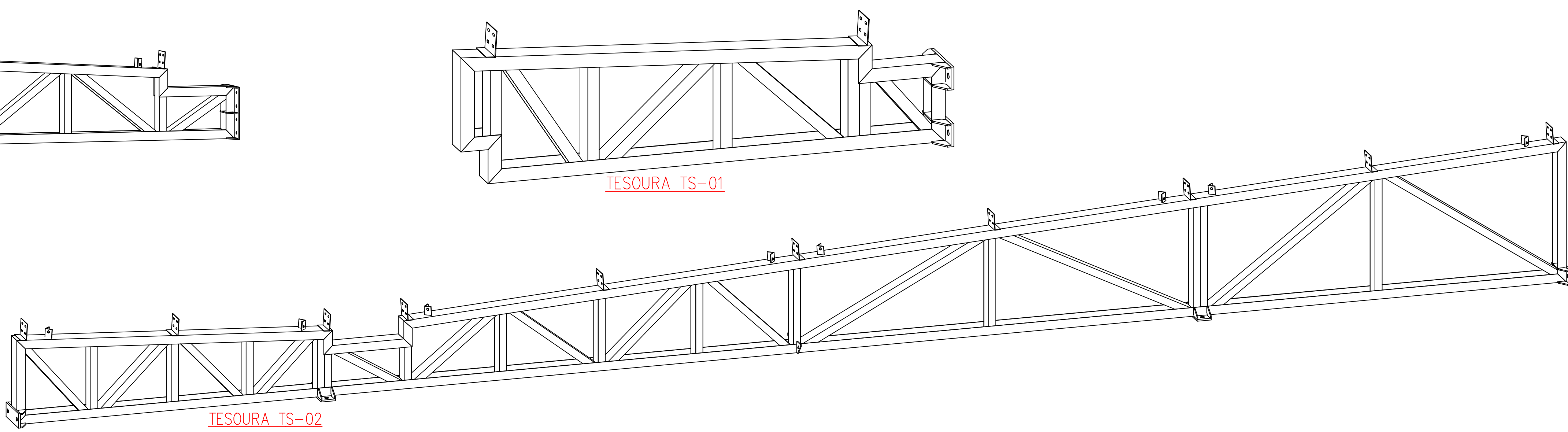
TS-6 Qt. 1



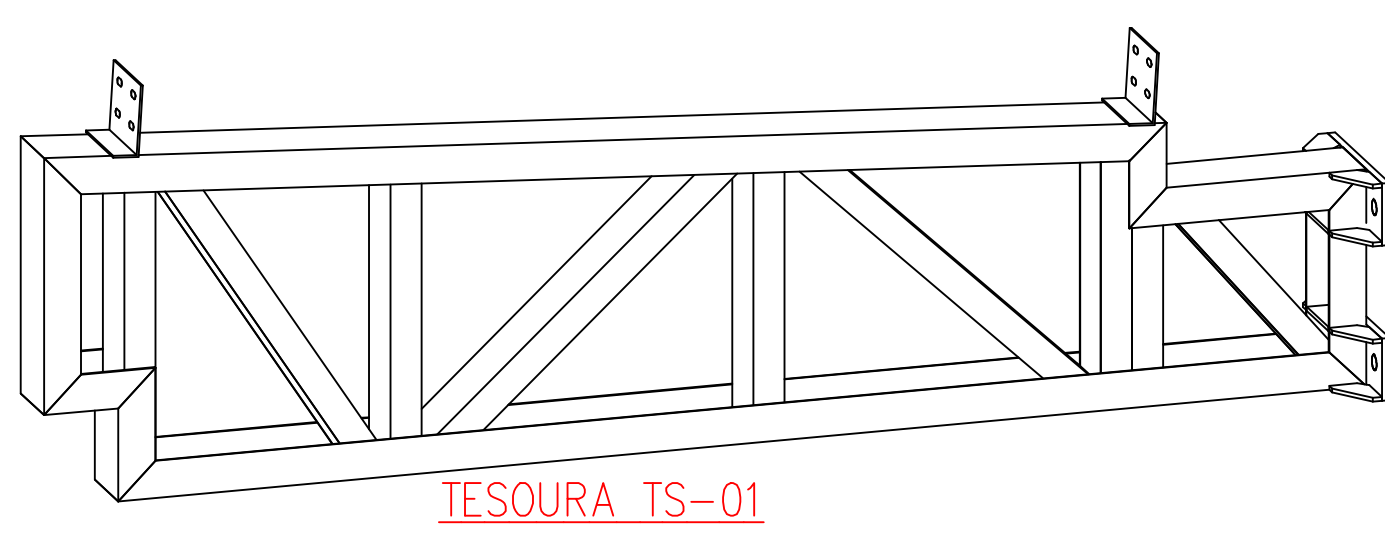
TESOURA TS-03



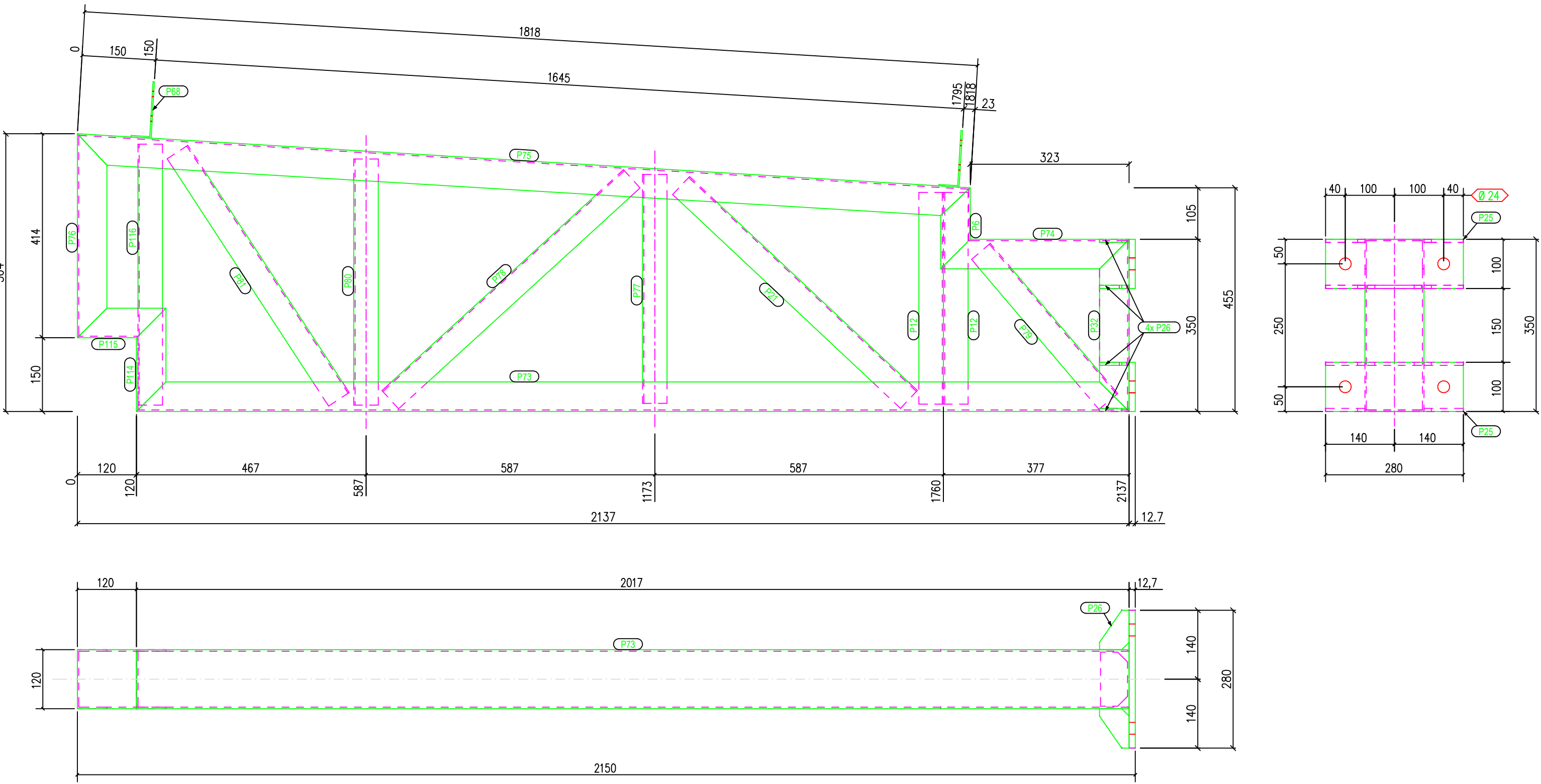
TESOURA TS-06



TESOURA TS-02



TESOURA TS-01



TS-1 Qt. 3

LISTA DE POSIÇÕES						
POS.	QTD.	DESCRIÇÃO	COMP. (mm)	MATERIAL	PESO (kg)	SUP. (m²)
TS-1	1	TESOURA TRELICADA			57,4	172,2
P8	3	U 120x60x3.00	165	ASTM A36	0,6	1,7
P12	6	U 110x50x2.65	430	ASTM A36	1,8	11,0
P21	3	U 110x50x2.65	635	ASTM A36	2,7	8,1
P25	6	# 280.0x100.0x12.7	290	ASTM A36	2,8	16,7
P26	24	# 80.0x60.0x6.35	80	ASTM A36	0,2	5,7
P31	6	# 110.0x55.0x6.35	110	ASTM A36	0,3	1,8
P32	3	U 120x60x3.00	380	ASTM A36	1,8	5,3
P33	3	U 120x60x3.00	2017	ASTM A36	10,9	32,8
P74	3	U 120x60x3.00	383	ASTM A36	1,8	5,3
P75	3	U 120x60x3.00	1818	ASTM A36	9,8	29,5
P76	3	U 120x60x3.00	414	ASTM A36	2,1	6,4
P77	3	U 110x50x2.65	690	ASTM A36	2,6	7,7
P78	3	U 110x50x2.65	695	ASTM A36	2,8	8,5
P79	3	U 110x50x2.65	400	ASTM A36	1,7	5,1
P80	3	U 110x50x2.65	500	ASTM A36	2,1	6,4
P81	3	U 110x50x2.65	690	ASTM A36	2,6	7,7
P114	3	U 120x60x3.00	210	ASTM A36	0,8	2,5
P115	3	U 120x60x3.00	180	ASTM A36	0,7	2,0
P116	3	U 120x60x3.00	530	ASTM A36	2,3	6,8
P68	6	L 115x41x3.00	140	ASTM A36	0,5	3,0
PESO TOTAL = 172,2 kg					SUPERFÍCIE A TRATAR: 141 m²	

POS.	QTD.	DESCRIÇÃO	COMP. (mm)	MATERIAL	PESO (kgf)	SUP. (m²)
TS-1	1	TESOURA TRELICADA			156,45	156,45
P2	1	U 120x60x3.00	979	ASTM A36	5,21	5,21
P15	1	U 110x50x2.65	565	ASTM A36	2,41	2,41
P16	1	U 110x50x2.65	610	ASTM A36	2,60	2,60
P17	1	U 110x50x2.65	695	ASTM A36	2,96	2,96
P18	2	U 110x50x2.65	790	ASTM A36	3,36	6,73
P24	1	U 110x50x2.65	485	ASTM A36	2,07	2,07
P25	2	# 280.0x100.0x12.7	280	ASTM A36	2,79	5,58
P26	14	# 80.0x60.0x6.35	80	ASTM A36	0,24	3,34
P27	1	U 120x60x3.00	8025	ASTM A36	47,35	47,35
P28	1	U 110x50x2.65	525	ASTM A36	2,34	2,34
P31	2	# 110.0x55.0x6.35	110	ASTM A36	0,30	0,60
P32	1	U 120x60x3.00	350	ASTM A36	1,75	1,75
P33	2	# 80.0x60.0x6.35	80	ASTM A36	0,32	0,64
P34	1	U 110x50x2.65	485	ASTM A36	2,07	2,07
P35	1	U 110x50x2.65	740	ASTM A36	3,15	3,15
P36	1	U 110x50x2.65	760	ASTM A36	3,24	3,24
P37	2	U 110x50x2.65	805	ASTM A36	3,43	6,86
P38	1	U 110x50x2.65	4445	ASTM A36	6,15	6,15
P39	1	U 110x50x2.65	1510	ASTM A36	6,43	6,43
P40	1	U 110x50x2.65	1400	ASTM A36	5,96	5,96
P41	1	U 110x50x2.65	1500	ASTM A36	6,39	6,39
P42	6	L 50x5x4.75	60	ASTM A36	0,21	1,28
P43	1	# 350.0x130.0x9.52	350	ASTM A36	2,30	0,21
P68	7	L 115x41x3.00	140	ASTM A36	0,50	3,53
PESO TOTAL = 189,74 kg					SUPERFÍCIE A TRATAR: 16,06 m²	

POS.	QTD.	DESCRIÇÃO	COMP. (mm)	MATERIAL	PESO (kgf)	SUP. (m²)
TS-2	16	TESOURA TRELICADA			238,26	12,48
P1	16	U 120x60x3.00	10870	ASTM A36	59,72	95,58
P2	16	U 120x60x3.00	970	ASTM A36	5,21	83,36
P3	16	U 120x60x3.00	8171	ASTM A36	44,85	711,62
P4	16	U 120x60x3.00	186	ASTM A36	0,70	11,22
P5	16	U 120x60x3.00	820	ASTM A36	2,93	46,92
P6	16	U 120x60x3.00	165	ASTM A36	0,58	9,30
P7	16	U 120x60x3.00	2218	ASTM A36	12,05	16,60
P8	16	U 120x60x3.00	589	ASTM A36	3,06	48,96
P9	16	U 110x50x2.65	525	ASTM A36	2,24	35,76
P10	16	U 110x50x2.65	495	ASTM A36	2,11	33,72
P11	16	U 110x50x2.65	455	ASTM A36	1,94	31,00
P12	32	U 110x50x2.65	430	ASTM A36	1,83	58,60
P13	16	U 110x50x2.65	450	ASTM A36	1,92	30,66
P14	16	U 110x50x2.65	520	ASTM A36	2,21	35,42
P15	16	U 110x50x2.65	565	ASTM A36	2,41	38,50
P16	16	U 110x50x2.65	610	ASTM A36	2,60	41,56
P17	16	U 110x50x2.65	695	ASTM A36	2,96	47,36
P18	32	U 110x50x2.65	790	ASTM A36	3,36	107,64
P19	16	U 110x50x2.65	715	ASTM A36	3,04	48,72
P20	16	U 110x50x2.65	675	ASTM A36	2,87	45,98
P21	16	U 110x50x2.65	635	ASTM A36	2,70	43,26
P22	16	U 110x50x2.65	575	ASTM A36	2,45	39,18
P23	16	U 110x50x2.65	560	ASTM A36	2,38	38,16
P24	16	U 110x50x2.65	870	ASTM A36	3,70	59,28
P25	84	# 280.0x100.0x12.7	280	ASTM A36	2,79	178,66
P26	256	# 80.0x60.0x6.35	80	ASTM A36	0,24	61,26
P31	32	# 110.0x55.0x6.35	110	ASTM A36	0,30	9,64
P33	32	# 80.0x60.0x6.35	80	ASTM A36	0,32	10,20
P34	16	U 110x50x2.65	485	ASTM A36	2,07	33,04
P35	16	U 110x50x2.65	740	ASTM A36	3,15	50,42
P36	16	U 110x50x2.65	760	ASTM A36	3,24	51,78
P37	32	U 110x50x2.65	805	ASTM A36	3,43	109,70
P38	16	U 110x50x2.65	1445	ASTM A36	6,15	98,46
P39	16	U 110x50x2.65	1510	ASTM A36	6,43	102,88
P40	16	U 110x50x2.65	1400	ASTM A36	5,96	95,35
P41	16	U 110x50x2.65	1500	ASTM A36	6,39	102,20
P42	128	L 50x5x4.75	60	ASTM A36	0,21	27,28
P68	160	L 115x41x3.00	140	ASTM A36	0,50	80,72
PESO TOTAL = 3812,12 kg					SUPERFÍCIE A TRATAR: 328,42 m²	

LISTA DE POSIÇÕES						
POS.	QTD.	DESCRIÇÃO	COMP. (mm)	MATERIAL	PESO (kgf)	SUP. (m²)
TS-3	1	TESOURA TRELICADA			189,74	189,74
P2	1	U 120x60x3.00	979	ASTM A36	5,21	5,21
P3	1	U 120x60x3.00	8171	ASTM A36	44,85	44,85
P4	1	U 120x60x3.00	186	ASTM A36	0,70	0,70
P13	1	U 110x50x2.65	450	ASTM A36	1,92	1,92
P14	2	U 110x50x2.65	520	ASTM A36	2,21	4,43
P15	1	U 110x50x2.65	565	ASTM A36	2,41	2,41
P16	1	U 110x50x2.65	610	ASTM A36	2,60	2,60
P17	1	U 110x50x2.65	695	ASTM A36	2,96	2,96
P18	2	U 110x50x2.65	790	ASTM A36	3,36	6,73
P19	1	U 110x50x2.65	870	ASTM A36	3,70	3,70
P25	2	# 280.0x100.0x12.7	280	ASTM A36	2,79	5,58
P26	14	# 80.0x60.0x6.35	80	ASTM A36	0,24	3,34
P27	1	U 120x60x3.00	8025	ASTM A36	47,35	47,35
P28	1	U 110x50x2.65	525	ASTM A36	2,34	2,34
P31	2	# 110.0x55.0x6.35	110	ASTM A36	0,30	0,60
P32	1	U 120x60x3.00	350	ASTM A36	1,75	1,75
P33	2	# 80.0x60.0x6.35	80	ASTM A36	0,32	0,64
P34	1	U 110x50x2.65	485	ASTM A36	2,07	2,07
P35	1	U 110x50x2.65	740	ASTM A36	3,15	3,15
P36	1	U 110x50x2.65	760	ASTM A36	3,24	3,24
P37	2	U 110x50x2.65	805	ASTM A36	3,43	6,86
P38	1	U 110x50x2.65	4445	ASTM A36	6,15	6,15
P39	1	U 110x50x2.65	1510	ASTM A36	6,43	6,43
P40	1	U 110x50x2.65	1400	ASTM A36	5,96	5,96
P41	1	U 110x50x2.65	1500	ASTM A36	6,39	6,39
P42	6	L 50x5x4.75	60	ASTM A36	0,21	1,28
P43	1	# 350.0x130.0x9.52	350	ASTM A36	2,30	0,21
P68	7	L 115x41x3.00	140	ASTM A36	0,50	3,53
PESO TOTAL = 189,74 kg					SUPERFÍCIE A TRATAR: 16,06 m²	

P40	1	U 110x50x2.65	1570	ASTM A36	5.98	5.98	0.07
P41	1	U 110x50x2.65	1400	ASTM A36	5.39	5.39	0.62
P42	6	L 50x50x4.75	60	ASTM A36	0.21	1.28	0.01
P43	1	U 110x50x2.65	1400	ASTM A36	5.39	5.39	0.62
P44	1	U 110x50x2.65	1400	ASTM A36	5.39	5.39	0.62
P45	1	U 110x50x2.65	1400	ASTM A36	5.39	5.39	0.62
P46	1	U 110x50x2.65	1400	ASTM A36	5.39	5.39	0.62
P47	1	U 110x50x2.65	1400	ASTM A36	5.39	5.39	0.62
P48	7	L 50x50x4.75	140	ASTM A36	0.50	3.53	0.04
PESO TOTAL = 1674 kg			SUPERFÍCIE A TARELA = 16.66 m²				

POS.	QTD	DESCRIÇÃO	COMP. (mm)	MATERIAL	PESO (kgf)	SUP. (m²)
TS-2	16	TESOURA TRELICADA			238,26	12,48
P1	16	U 120x60x3.00	10870	ASTM A36	59,72	95,58
P2	16	U 120x60x3.00	970	ASTM A36	5,21	83,36
P3	16	U 120x60x3.00	8171	ASTM A36	44,85	711,62
P4	16	U 120x60x3.00	186	ASTM A36	0,70	11,22
P5	16	U 120x60x3.00	820	ASTM A36	2,93	46,92
P6	16	U 120x60x3.00	165	ASTM A36	0,58	9,30
P7	16	U 120x60x3.00	2218	ASTM A36	12,05	16,60
P8	16	U 120x60x3.00	589	ASTM A36	3,06	48,96
P9	16	U 110x50x2.65	525	ASTM A36	2,24	35,76
P10	16	U 110x50x2.65	495	ASTM A36	2,11	33,72
P11	16	U 110x50x2.65	455	ASTM A36	1,94	31,00
P12	32	U 110x50x2.65	430	ASTM A36	1,83	58,60
P13	16	U 110x50x2.65	450	ASTM A36	1,92	30,66
P14	16	U 110x50x2.65	520	ASTM A36	2,21	35,42
P15	16	U 110x50x2.65	565	ASTM A36	2,41	38,50
P16	16	U 110x50x2.65	610	ASTM A36	2,60	41,56
P17	16	U 110x50x2.65	695	ASTM A36	2,96	47,36
P18	32	U 110x50x2.65	790	ASTM A36	3,36	107,64
P19	16	U 110x50x2.65	715	ASTM A36	3,04	48,72
P20	16	U 110x50x2.65	675	ASTM A36	2,87	45,98
P21	16	U 110x50x2.65	635	ASTM A36	2,70	43,26
P22	16	U 110x50x2.65	575	ASTM A36	2,45	39,18
P23	16	U 110x50x2.65	560	ASTM A36	2,38	38,16
P24	16	U 110x50x2.65	870	ASTM A36	3,70	59,28
P25	84	# 280.0x100.0x12.7	280	ASTM A36	2,79	178,66
P26	256	# 80.0x60.0x6.35	80	ASTM A36	0,24	61,26
P31	32	# 110.0x55.0x6.35	110	ASTM A36	0,30	9,64
P33	32	# 80.0x60.0x6.35	80	ASTM A36	0,32	10,20
P34	16	U 110x50x2.65	485	ASTM A36	2,07	33,04
P35	16	U 110x50x2.65	740	ASTM A36	3,15	49,74